



Positronic[®]
an Amphenol company



COMMERCIAL AIR

The commercial air market is a dynamic and rapidly evolving sector, driven by advancements in technology, increasing passenger demand, and the need for enhanced safety and efficiency. Airlines and aircraft manufacturers are continually innovating to improve performance, reduce costs, and meet stringent regulatory standards. The market encompasses a wide range of applications, from avionics and in-flight entertainment systems to landing gear and communication networks. With the growing emphasis on lightweight, high-performance, and reliable components, the commercial air market is focused on developing cutting-edge solutions that can withstand the rigorous demands of frequent flights, diverse environmental conditions, and the ever-increasing need for speed and connectivity.

APPLICATIONS

- Aircraft Power & Signal
- Airframe Installation
- Avionics and Instrumentation
- Cabin Service Systems
- IFEC and Seating

FEATURES & BENEFITS

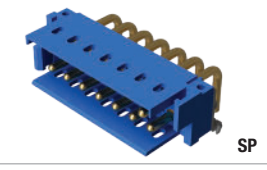
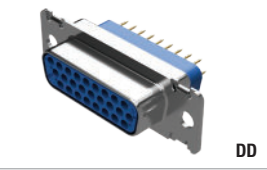
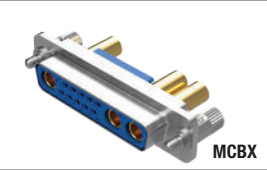
- Customizable modular power and signal connectors can be tailored to meet specific customer requirements
- Hybrid connectors allow for power and signal transmission within a single connector
- Space-saving slim rectangular profiles are optimized for design efficiency
- Vibration and shock resistance maintains secure connections
- EMI/RFI shielding protects sensitive electronics from external electromagnetic signals

Our connectors have proven their effectiveness in a wide range of commercial air applications. Examples include COMBO-D connectors used in long-range business jet flight controls and High-Temp SCORPION connectors, made from LCP, found in Electronic Circuit Breaker Units used in aircraft electrical systems.

M048 25/01

FEATURE	D-SUB					POWER & HYBRID			
	MCD MCDD MCBX	DD	HDC RD	CBC CBD CBM	CBDD CBCD	GFSH	SM	SP	LSP
#4 Contacts								•	
#8 Contacts	MCBX			•	•			•	
#12 Contacts						•	•	•	•
#16 Contacts	MCBX					•	•	•	
#18 Contacts							•	•	
#20 Contacts	MCD MCBX		•	•		•			•
#22 Contacts	MCDD MCBX	•			•		•		
Solid machined contacts	•	•	•	•	•	•	•	•	•
Power and signal in a single connector	MCBX			•	•	•	•	•	•
Modular connector with expandable envelope								•	•
Configurable layout							•	•	•
Integral blind mating	•	•	•	•	•	•	•	•	•
Metal shell	•	•	•	•	•		•	•	
High voltage	MCBX			CBC CBD			•	•	•
UL approved				CBC CBD		•		•	
Wire termination	•	•	RD	CBC CBD	CBCD	•	•	•	•
PCB termination	•	•	HDC	•	CBDD	•	•	•	•
Press-fit PCB contacts	•			CBC CBD		•		•	•
First mate, last break							•	•	•
Venting								•	•
Panel mount	•			•	CBDD	•	•	•	•
Free cable	•	•	RD	CBC CBD	•	•	•	•	•

• Applicable to all products
 Example: SND Applicable to select product lines



Positronic | Americas

1325 N Eldon Ave
 Springfield MO 65803 USA
 +1 800 641 4054
 info@connectpositronic.com

Positronic | Europe

46 route d'Engachies
 F-32020 Auch Cedex 9 France
 +33 5 6263 4491
 contact@connectpositronic.com

Positronic | Asia

3014A Ubi Rd 1 #07-01
 Singapore 408703
 +65 6842 1419
 singapore@connectpositronic.com

Sales Offices

Positronic has local sales representation all over the world. For the nearest sales office visit www.connectpositronic.com/sales