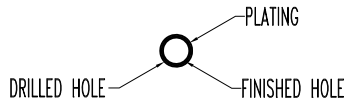


POSITRONIC INDUSTRIES BELIEVES THE DATA ON THIS DRAWING TO BE RELIABLE, SINCE THE TECHNICAL INFORMATION IS GIVEN FREE OF CHARGE, THE USER EMPLOYS SUCH INFORMATION AT HIS OWN DISCRETION AND RISK. POSITRONIC INDUSTRIES ASSUMES NO RESPONSIBILITY FOR RESULTS OBTAINED OR DAMAGES INCURRED FROM USE OF SUCH INFORMATION IN WHOLE OR IN PART.

DATE	REV	REVISION RECORD	APP	DR	CK
8-14-06	C	ECO 26510	TK	YK	TK
8-5-08	D	ECO 29799	RCW	YK	RCW
10-14-08	E	ECO 30108	TK	YK	TK
9-28-16	F	ECO 52766	COLE	AWR	COLE

SIZE 20-22 OMEGA CONTACT HOLE

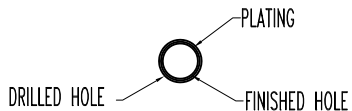
BOARD TYPE	RECOMMENDED DRILLED HOLE SIZE	RECOMMENDED PLATING	FINISHED HOLE SIZES
TIN-LEAD SOLDER PCB	$\varnothing 1.150 \pm 0.025$ [ $\varnothing 0.0453 \pm 0.0010$ ]	15 $\mu$ [0.0006] MINIMUM SOLDER OVER 25 $\mu$ [0.0010] MIN. COPPER	$\varnothing 1.000 + 0.090 - 0.060$ [ $\varnothing 0.0394 + 0.0035 - 0.0024$ ]
COPPER PCB	$\varnothing 1.19 \pm 0.025$ [ $\varnothing 0.047 \pm 0.001$ ]	25 $\mu$ [0.0010] MIN. COPPER	$\varnothing 1.09 \pm 0.05$ [ $\varnothing 0.043 \pm 0.002$ ]
IMMERSION TIN PCB	$\varnothing 1.19 \pm 0.025$ [ $\varnothing 0.047 \pm 0.001$ ]	0.85 $\pm 0.15\mu$ [0.000033 $\pm 0.000006$ ] IMMERSION TIN OVER 25 $\mu$ [0.0010] MIN. COPPER	$\varnothing 1.09 \pm 0.05$ [ $\varnothing 0.043 \pm 0.002$ ]
IMMERSION SILVER PCB	$\varnothing 1.19 \pm 0.025$ [ $\varnothing 0.047 \pm 0.001$ ]	0.34 $\pm 0.17\mu$ [0.000013 $\pm 0.000007$ ] IMMERSION SILVER OVER 25 $\mu$ [0.0010] MIN. COPPER	$\varnothing 1.09 \pm 0.05$ [ $\varnothing 0.043 \pm 0.002$ ]
ELECTROLESS NICKEL/IMMERSION GOLD PCB	$\varnothing 1.19 \pm 0.025$ [ $\varnothing 0.047 \pm 0.001$ ]	0.05 $\mu$ [0.000002] MIN. IMMERSION GOLD OVER 4.5 $\pm 1.5\mu$ [0.000177 $\pm 0.000059$ ] ELECTROLESS NICKEL PER IPC-4552 OVER 25 $\mu$ [0.0010] MIN. COPPER	$\varnothing 1.09 \pm 0.05$ [ $\varnothing 0.043 \pm 0.002$ ]



SIZE 20 AND 22 OMEGA CONTACT HOLE

SIZE 18 PRESS-FIT CONTACT HOLE

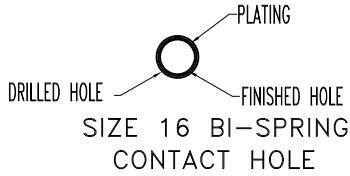
BOARD TYPE	RECOMMENDED DRILLED HOLE SIZE	RECOMMENDED PLATING	FINISHED HOLE SIZES
TIN-LEAD SOLDER PCB	$\varnothing 1.580 \pm 0.025$ [ $\varnothing 0.062 \pm 0.001$ ]	15 $\mu$ [0.0006] MINIMUM SOLDER OVER 25 $\mu$ [0.0010] MIN. COPPER	$\varnothing 1.430 + 0.090 - 0.060$ [ $\varnothing 0.0563 + 0.0035 - 0.0024$ ]
COPPER PCB	$\varnothing 1.580 \pm 0.025$ [ $\varnothing 0.062 \pm 0.001$ ]	25 $\mu$ [0.0010] MIN. COPPER	$\varnothing 1.430 + 0.090 - 0.060$ [ $\varnothing 0.0563 + 0.0035 - 0.0024$ ]
IMMERSION TIN PCB	$\varnothing 1.580 \pm 0.025$ [ $\varnothing 0.062 \pm 0.001$ ]	0.85 $\pm 0.15\mu$ [0.000033 $\pm 0.000006$ ] IMMERSION TIN OVER 25 $\mu$ [0.0010] MIN. COPPER	$\varnothing 1.430 + 0.090 - 0.060$ [ $\varnothing 0.0563 + 0.0035 - 0.0024$ ]
IMMERSION SILVER PCB	$\varnothing 1.580 \pm 0.025$ [ $\varnothing 0.062 \pm 0.001$ ]	0.34 $\pm 0.17\mu$ [0.000013 $\pm 0.000007$ ] IMMERSION SILVER OVER 25 $\mu$ [0.0010] MIN. COPPER	$\varnothing 1.430 + 0.090 - 0.060$ [ $\varnothing 0.0563 + 0.0035 - 0.0024$ ]
ELECTROLESS NICKEL/IMMERSION GOLD PCB	$\varnothing 1.580 \pm 0.025$ [ $\varnothing 0.062 \pm 0.001$ ]	0.05 $\mu$ [0.000002] MIN. IMMERSION GOLD OVER 4.5 $\pm 1.5\mu$ [0.000177 $\pm 0.000059$ ] ELECTROLESS NICKEL PER IPC-4552 OVER 25 $\mu$ [0.0010] MIN. COPPER	$\varnothing 1.430 + 0.090 - 0.060$ [ $\varnothing 0.0563 + 0.0035 - 0.0024$ ]



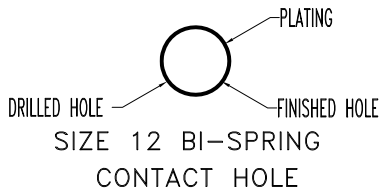
SIZE 18 BI-SPRING CONTACT HOLE

		<b>POSITRONIC INDUSTRIES INC.</b> www.connectpositronic.com	
		COMPLIANT TERMINATION CONTACTS	SCALE: N.T.S. DRAWN BY: TKEPLEY APPROVED BY: RCW
DECIMAL TOL. $\pm 0.38[0.015]$	TITLE: PLATED PCB HOLES		
ANGULAR TOL. $\pm 5^\circ$	DATE: 8-5-05	DRAWING NUMBER: SK6370	SHEET 1 OF 3
			REV. F

POSITRONIC INDUSTRIES BELIEVES THE DATA ON THIS DRAWING TO BE RELIABLE, SINCE THE TECHNICAL INFORMATION IS GIVEN FREE OF CHARGE, THE USER EMPLOYS SUCH INFORMATION AT HIS OWN DISCRETION AND RISK. POSITRONIC INDUSTRIES ASSUMES NO RESPONSIBILITY FOR RESULTS OBTAINED OR DAMAGES INCURRED FROM USE OF SUCH INFORMATION IN WHOLE OR IN PART.

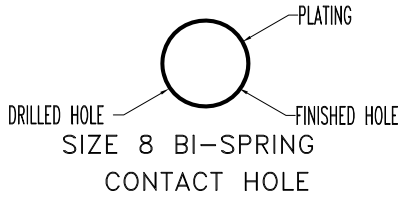


SIZE 16 PRESS-FIT CONTACT HOLE			
BOARD TYPE	RECOMMENDED DRILLED HOLE SIZE	RECOMMENDED PLATING	FINISHED HOLE SIZES
TIN-LEAD SOLDER PCB	$\varnothing 1.750 \pm 0.025$ [ $\varnothing 0.069 \pm 0.001$ ]	15 $\mu$ [0.0006] MINIMUM SOLDER OVER 25 $\mu$ [0.0010] MIN. COPPER	$\varnothing 1.600 + 0.090 - 0.060$ [ $\varnothing 0.0630 + 0.0035 - 0.0024$ ]
COPPER PCB	$\varnothing 1.750 \pm 0.025$ [ $\varnothing 0.069 \pm 0.001$ ]	25 $\mu$ [0.0010] MIN. COPPER	$\varnothing 1.600 + 0.090 - 0.060$ [ $\varnothing 0.0630 + 0.0035 - 0.0024$ ]
IMMERSION TIN PCB	$\varnothing 1.750 \pm 0.025$ [ $\varnothing 0.069 \pm 0.001$ ]	0.85 $\pm 0.15\mu$ [0.000033 $\pm 0.000006$ ] IMMERSION TIN OVER 25 $\mu$ [0.0010] MIN. COPPER	$\varnothing 1.600 + 0.090 - 0.060$ [ $\varnothing 0.0630 + 0.0035 - 0.0024$ ]
IMMERSION SILVER PCB	$\varnothing 1.750 \pm 0.025$ [ $\varnothing 0.069 \pm 0.001$ ]	0.34 $\pm 0.17\mu$ [0.000013 $\pm 0.000007$ ] IMMERSION SILVER OVER 25 $\mu$ [0.0010] MIN. COPPER	$\varnothing 1.600 + 0.090 - 0.060$ [ $\varnothing 0.0630 + 0.0035 - 0.0024$ ]
ELECTROLESS NICKEL/IMMERSION GOLD PCB	$\varnothing 1.750 \pm 0.025$ [ $\varnothing 0.069 \pm 0.001$ ]	0.05 $\mu$ [0.000002] MIN. IMMERSION GOLD OVER 4.5 $\pm 1.5\mu$ [0.000177 $\pm 0.000059$ ] ELECTROLESS NICKEL PER IPC-4552 OVER 25 $\mu$ [0.0010] MIN. COPPER	$\varnothing 1.600 + 0.090 - 0.060$ [ $\varnothing 0.0630 + 0.0035 - 0.0024$ ]



SIZE 12 BI-SPRING CONTACT HOLE			
BOARD TYPE	RECOMMENDED DRILLED HOLE SIZE	RECOMMENDED PLATING	FINISHED HOLE SIZES
TIN-LEAD SOLDER PCB	$\varnothing 2.59 \pm 0.025$ [ $\varnothing 0.102 \pm 0.001$ ]	15 $\mu$ [0.0006] MINIMUM SOLDER OVER 25 $\mu$ [0.0010] MIN. COPPER	$\varnothing 2.44 \pm 0.05$ [ $\varnothing 0.096 \pm 0.002$ ]
COPPER PCB	$\varnothing 2.59 \pm 0.025$ [ $\varnothing 0.102 \pm 0.001$ ]	25 $\mu$ [0.0010] MIN. COPPER	$\varnothing 2.44 \pm 0.05$ [ $\varnothing 0.096 \pm 0.002$ ]
IMMERSION TIN PCB	$\varnothing 2.59 \pm 0.025$ [ $\varnothing 0.102 \pm 0.001$ ]	0.85 $\pm 0.15\mu$ [0.000033 $\pm 0.000006$ ] IMMERSION TIN OVER 25 $\mu$ [0.0010] MIN. COPPER	$\varnothing 2.44 \pm 0.05$ [ $\varnothing 0.096 \pm 0.002$ ]
IMMERSION SILVER PCB	$\varnothing 2.59 \pm 0.025$ [ $\varnothing 0.102 \pm 0.001$ ]	0.34 $\pm 0.17\mu$ [0.000013 $\pm 0.000007$ ] IMMERSION SILVER OVER 25 $\mu$ [0.0010] MIN. COPPER	$\varnothing 2.44 \pm 0.05$ [ $\varnothing 0.096 \pm 0.002$ ]
ELECTROLESS NICKEL/IMMERSION GOLD PCB	$\varnothing 2.59 \pm 0.025$ [ $\varnothing 0.102 \pm 0.001$ ]	0.05 $\mu$ [0.000002] MIN. IMMERSION GOLD OVER 4.5 $\pm 1.5\mu$ [0.000177 $\pm 0.000059$ ] ELECTROLESS NICKEL PER IPC-4552 OVER 25 $\mu$ [0.0010] MIN. COPPER	$\varnothing 2.44 \pm 0.05$ [ $\varnothing 0.096 \pm 0.002$ ]

POSITRONIC INDUSTRIES BELIEVES THE DATA ON THIS DRAWING TO BE RELIABLE, SINCE THE TECHNICAL INFORMATION IS GIVEN FREE OF CHARGE, THE USER EMPLOYS SUCH INFORMATION AT HIS OWN DISCRETION AND RISK. POSITRONIC INDUSTRIES ASSUMES NO RESPONSIBILITY FOR RESULTS OBTAINED OR DAMAGES INCURRED FROM USE OF SUCH INFORMATION IN WHOLE OR IN PART.



SIZE 8 BI-SPRING CONTACT HOLE			
BOARD TYPE	RECOMMENDED DRILLED HOLE SIZE	RECOMMENDED PLATING	FINISHED HOLE SIZES
TIN-LEAD SOLDER PCB	$\varnothing 3.180 \pm 0.025$ [ $\varnothing 0.125 \pm 0.001$ ]	15 $\mu$ [0.0006] MINIMUM SOLDER OVER 25 $\mu$ [0.0010] MIN. COPPER	$\varnothing 3.02 \pm 0.05$ [ $\varnothing 0.119 \pm 0.002$ ]
COPPER PCB	$\varnothing 3.180 \pm 0.025$ [ $\varnothing 0.125 \pm 0.001$ ]	25 $\mu$ [0.0010] MIN. COPPER	$\varnothing 3.02 \pm 0.05$ [ $\varnothing 0.119 \pm 0.002$ ]
IMMERSION TIN PCB	$\varnothing 3.180 \pm 0.025$ [ $\varnothing 0.125 \pm 0.001$ ]	0.85 $\pm 0.15\mu$ [0.000033 $\pm 0.000006$ ] IMMERSION TIN OVER 25 $\mu$ [0.0010] MIN. COPPER	$\varnothing 3.02 \pm 0.05$ [ $\varnothing 0.119 \pm 0.002$ ]
IMMERSION SILVER PCB	$\varnothing 3.180 \pm 0.025$ [ $\varnothing 0.125 \pm 0.001$ ]	0.34 $\pm 0.17\mu$ [0.000013 $\pm 0.000007$ ] IMMERSION SILVER OVER 25 $\mu$ [0.0010] MIN. COPPER	$\varnothing 3.02 \pm 0.05$ [ $\varnothing 0.119 \pm 0.002$ ]
ELECTROLESS NICKEL/IMMERSION GOLD PCB	$\varnothing 3.180 \pm 0.025$ [ $\varnothing 0.125 \pm 0.001$ ]	0.05 $\mu$ [0.000002] MIN. IMMERSION GOLD OVER 4.5 $\pm 1.5\mu$ [0.000177 $\pm 0.000059$ ] ELECTROLESS NICKEL PER IPC-4552 OVER 25 $\mu$ [0.0010] MIN. COPPER	$\varnothing 3.02 \pm 0.05$ [ $\varnothing 0.119 \pm 0.002$ ]